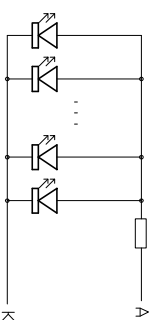
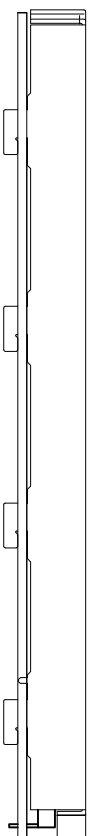


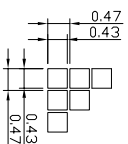
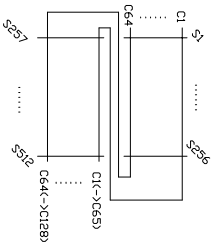
No.	Pin Name	Terminal
1	VDD	
2	VSS	
3	VEE	
4	CL1(LP)	
5	DF	
6	DISP/DFP	
7	NC	
8	ID68(YD)	
9	CL2(XCK)	
10	NC	
11	D0	
12	D1	
13	D2	
14	D3	
15	LEDA	
16	LEDK	



Backlight Circuit
Scale=free



- Note:
- *1. LCD Display Type : STN-Blue, Negative, Transmissive
 - *2. Viewing Direction : 6H
 - *3. Duty : 1/65; Bias : 1/9; Vop : 13.8V
 - *4. Operating Voltage : 5.0V
 - *5. Operating Temperature : 0°C~50°C
 - *6. Storage Temperature : -20°C~60°C
 - *7. Control/Drive IC : NT7086 or RA0086
 - *8. Backlight : White LED(5.0V-7LED)



Panel Wiring Details

Scale=free

Pixels Details

HOT DISPLAY

Dwg Title: HTM256128C REV A0

Dwg No.: RD-D-014 Date: 2012-10-18

Scale: 1/3 Unit: mm Tol: ±0.2

Drawn: RD01 Checked: Andyi Approved: